

POSC Caesar Association

Message @ KGA launch

10.11.2023

Lars Berthinussen, Managing Director, PCA



What is POSC Caesar Association (PCA) ?

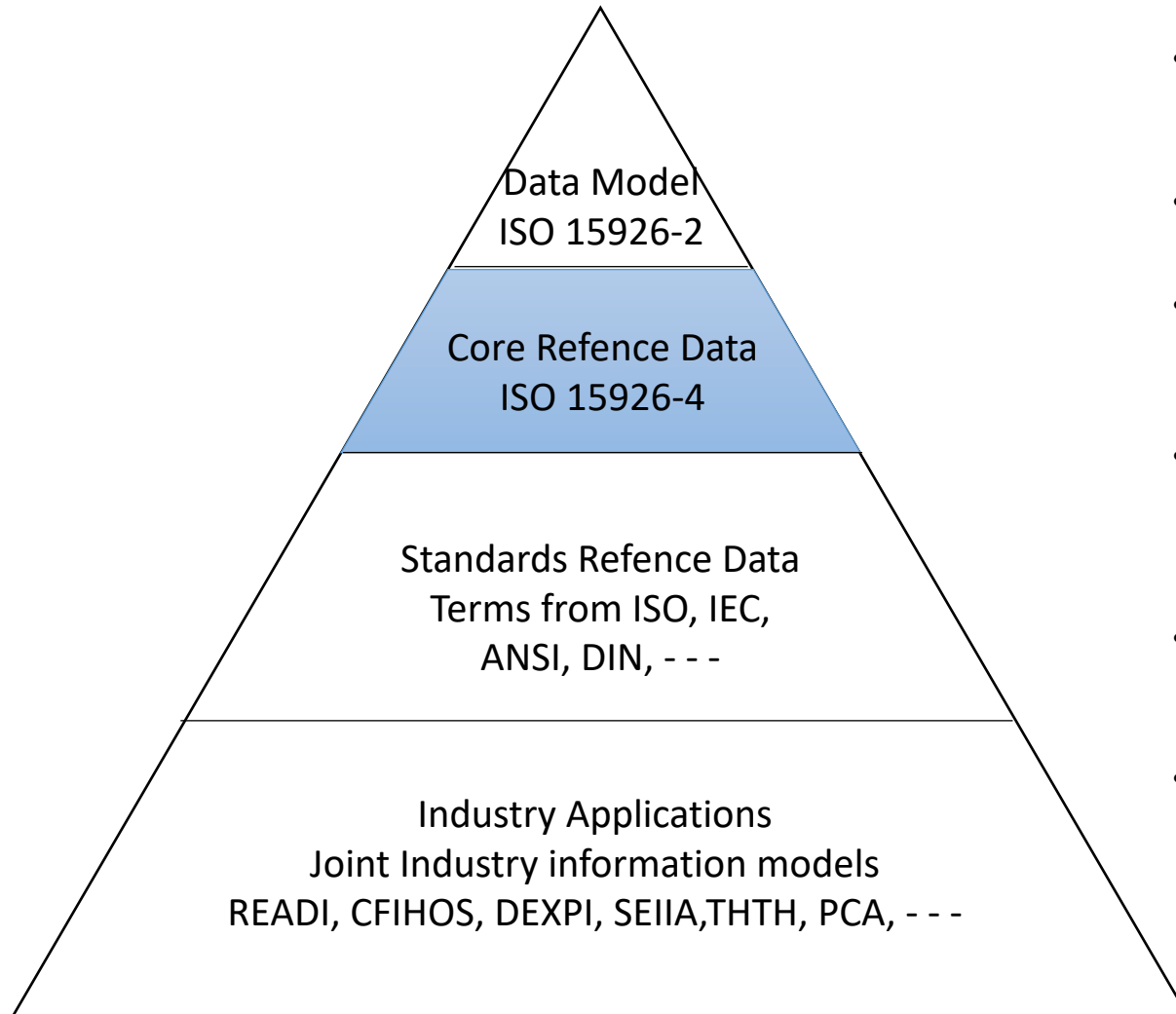
PCA is:

- A Norwegian based standardization membership association that collaborates globally

Purpose:

- PCA ... shall promote the development of openly available specifications to be used as standards for enabling the interoperability of data for industrial and commercial applications through promoting semantic technology in the energy and process industry.

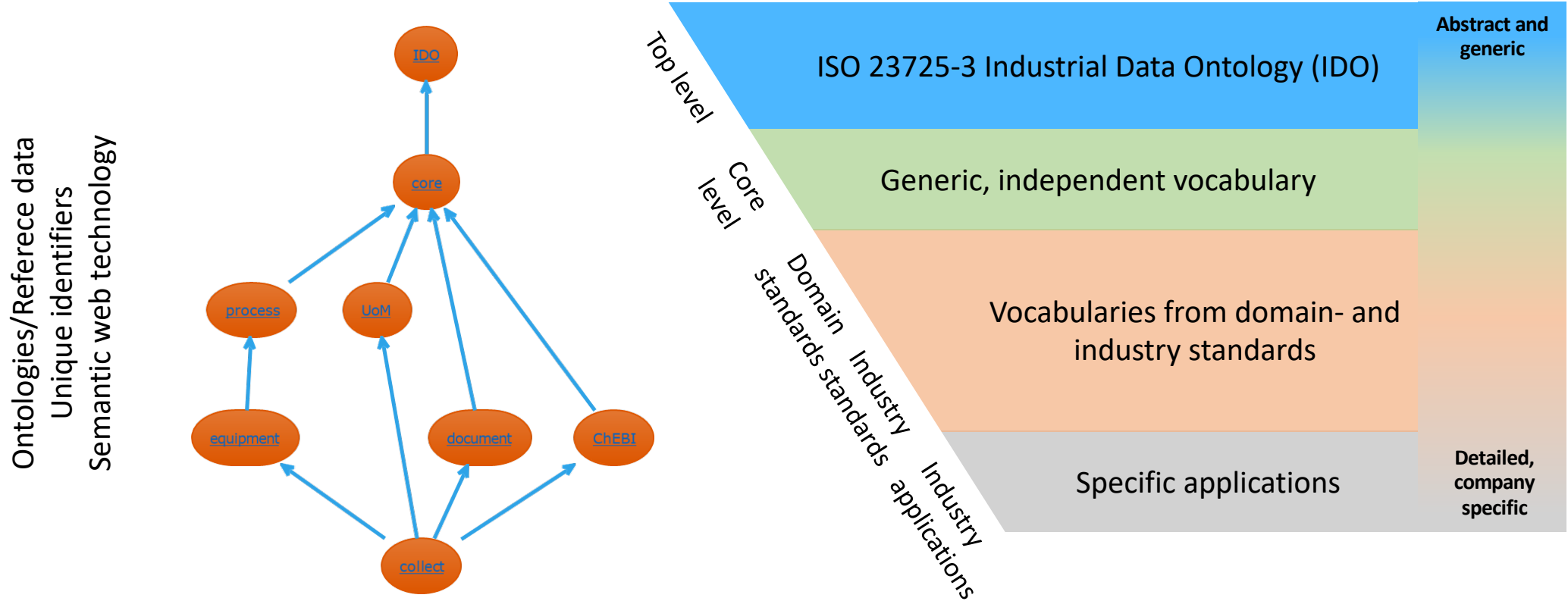
PCA – Reference Data Development from 1994 to 2021



*MRAIL –Master Reference data Action Internet List

- Development of the Data Model and the Reference Data Library (RDL) stated in 1994
 - Cooperation with PISTEP UK and USPI NL
- The PCA RDL has over 50 000 Reference Data Items (RDIs/Terms)
 - This RDL was shared with many corporations, universities, research institutes, etc.
- The PCA RDL is used all over the world
 - Five continents
 - Translated to both Russian and Chinese
- ISO 15926-4 ed. 1: *Initial reference data* was published by ISO in 2007.
 - Generated from the PCA database
 - 11 000 RDIs
- ISO 15926-4 ed. 2: *Initial reference data* was published in 2019.
 - Error corrections
 - UoM according to ISO 80 000
- The ISO 15926-4 *Core reference data* ed. 3 project was approved in May 2020
 - Three-year project based on PCA RDL 2, developed in *MRAIL
 - Include Core Reference Data from PCA, DEXPI and CFIHOS/JIP33
 - Collaboration with SEIIA and THTH started
 - 17 000 RDIs

PCA committs to provide machine understandable vocabularies for industrial data - enabling technical and semantic interoperability



PCA's IDO based reference data service (MVP) at rds.posccaesar.org

PCA drives standardization – towards new ISO 23725-3 (IDO)

First movers ensures drive and uptake



ISO 23725-3 IDO standardization in ISO (/TC 184/SC 4)

- **Stable reference**
 - Secure investments – READI, DISC (NOAKA/Yggdrasil), ILAP, etc.
- **Reasoning (Artificial Intelligence) to support automation and quality assurance**
- **Language to integrate standards and information across industries**
- **Simplicity and usability**
 - Re-use when possible
 - Keep it as minimalistic as possible
- **Improvements and quality assurance**
 - Through ISO process and community
- **Good documentation**



PCA facilitates digital collaboration – the DISC project

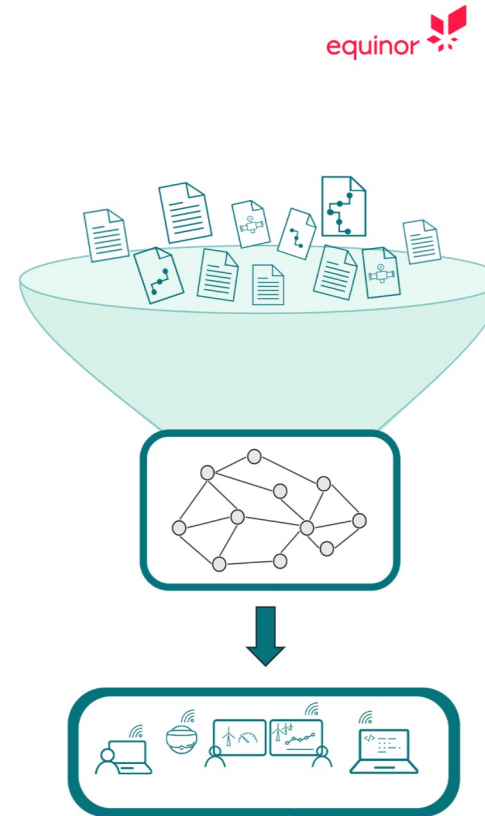
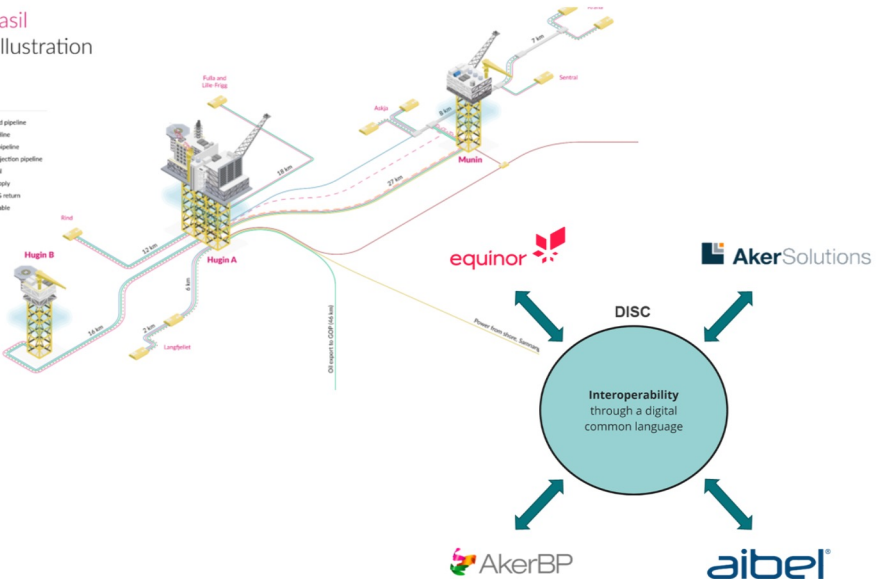
PCA's IDO based «staging library» <https://rds-staging.posccaesar.org/>

DISC - An arena for digital collaboration From Technical Information in Documents to Contextualized Data

Yggdrasil
Area illustration

October 2022

LEGEND
Well fluid pipeline
Gas pipeline
Gas lift pipeline
Water injection pipeline
Landfill
MEG supply
Rich TEG return
Power cable



PCA Reference Data and Services - Staging

Search... *g /Information Modelling Framework/Electrical Actuator (Function)

Navigation
Documentation
Industrial Data Ontology
Information Modelling Framework
IMF Type Library
Reference Data Library
Services
Templates

Electrical Actuator (Function)

An IMF type with identifier http://rds.posccaesar.org/imf/type/PCA_999000007

Metadata

Aspect	Function
Download	IMF Type sheet (Excel)
	Digital Datasheet (JSON)
Group	Instrumentation
Source	electricalactuator-imf-function-type-0.0.1.xlsx
Status	proposed

General

Name: Electrical actuator
purpose: ELECTRICAL TO MECHANICAL ENERGY CONVERTING
symbol
comment

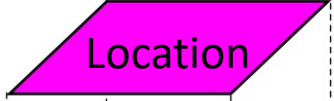
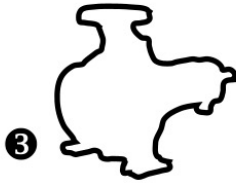
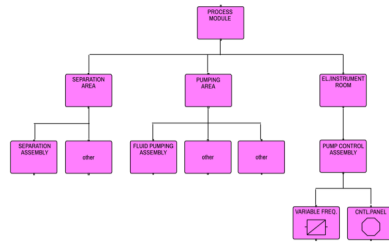
Attributes

Type of enclosure (missing class)
Power Consumption (missing class)
Ex Classification (missing class)
Type (missing class)
Orientation (missing class)
Width: None millimetre
Height: None millimetre
Length: None millimetre
Torque at min supply: None newton metre
Torque at max supply: None newton metre



Let my machine explain to your machine

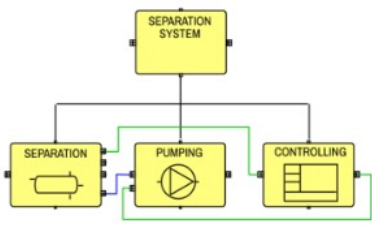
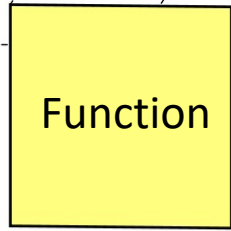
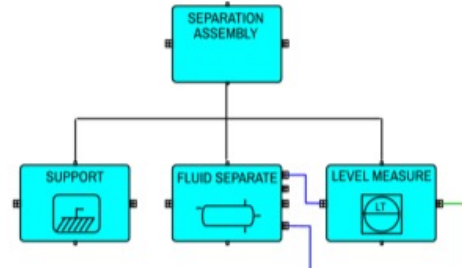
L: 12, W:34, H:56



No: 0987654321

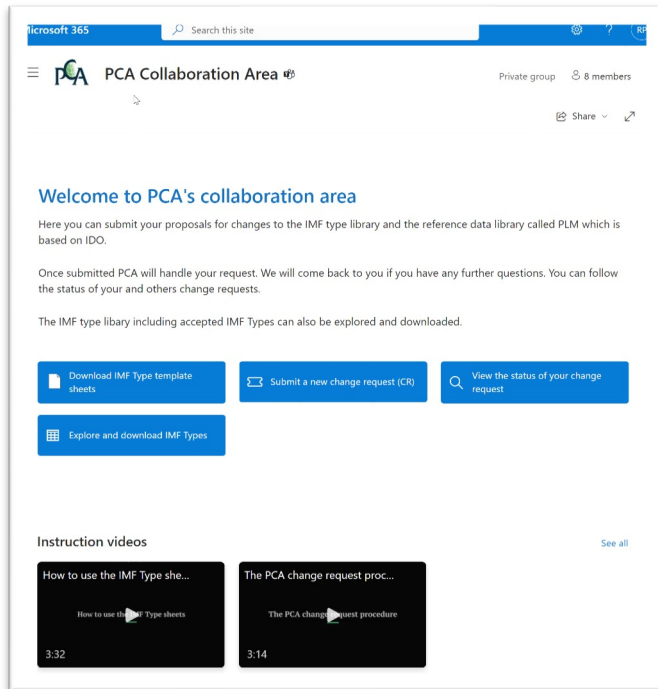


Product

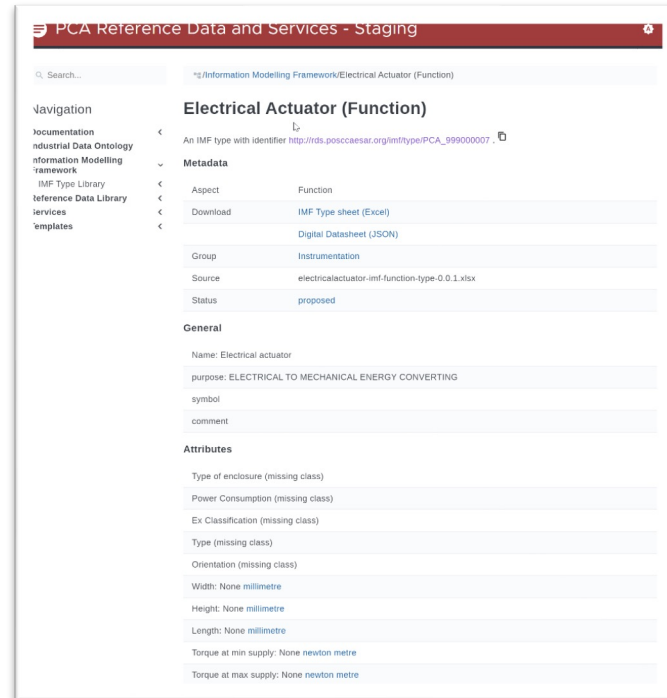


Aspects based on IEC/ISO 81346

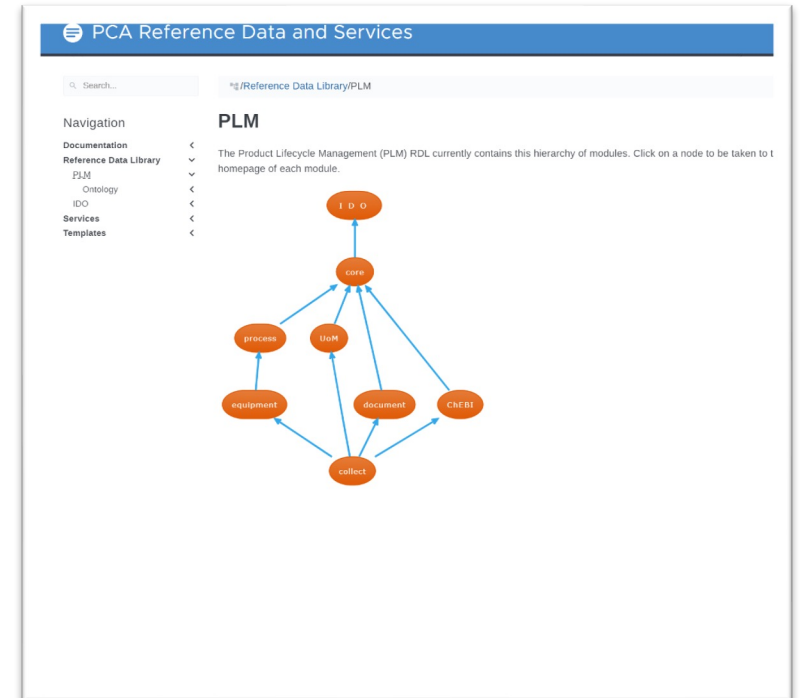
PCA's digital industry services based on the Industrial Data Ontology



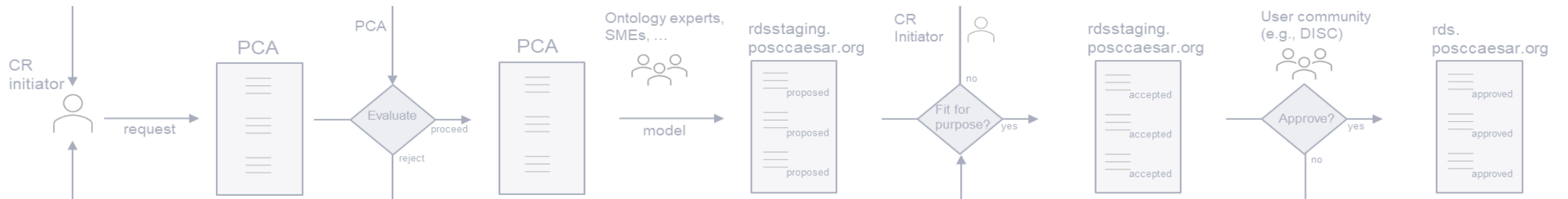
Restricted access



PCA's IDO based «staging library» <https://rds-staging.posccaesar.org/>



PCA's IDO based «production library» <https://rds.posccaesar.org/>



Why PCA and KGA?

- Be on the **edge**
- **Collaborate** and «prosper»
- **Grow and scale** the community
- **Accelerate** technology, tools and services
- **Democratize** and tear down silos between organizations, domains and industries

