



KGAROADMAP

WHAT IS NEXT FOR KGA?

9.11.2023

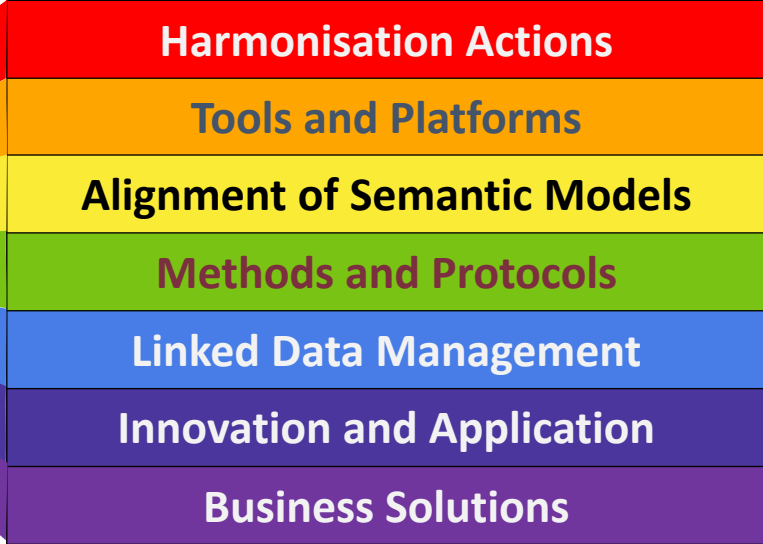
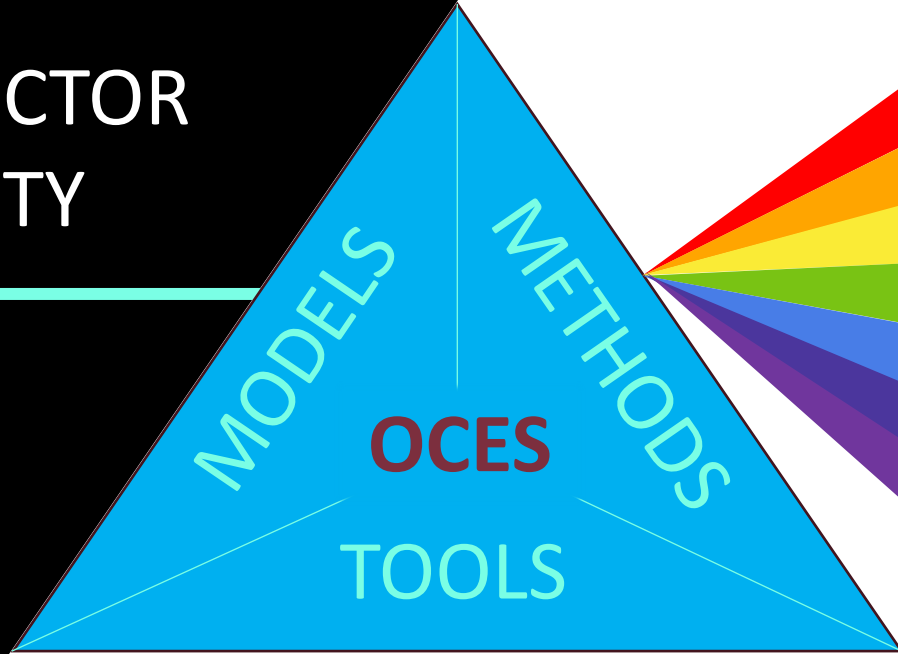


KGA ENVISAGES TO ACT AS A BRIDGE AMONG THE
ONGOING AND FUTURE EFFORTS IN SKG



INTRA- AND CROSS-SECTOR DATA INTEROPERABILITY

KEY WORKING GROUP THEMES



- Alignment of semantics
- Proven methodology
- Interoperable toolchain
- Sector-specific solutions
- Maturity, Readiness
- Innovation actions

SEMANTIC KNOWLEDGE GRAPH ENGINEERING POWERED BY [ONTOCOMMONS ECOSYSTEM](#)



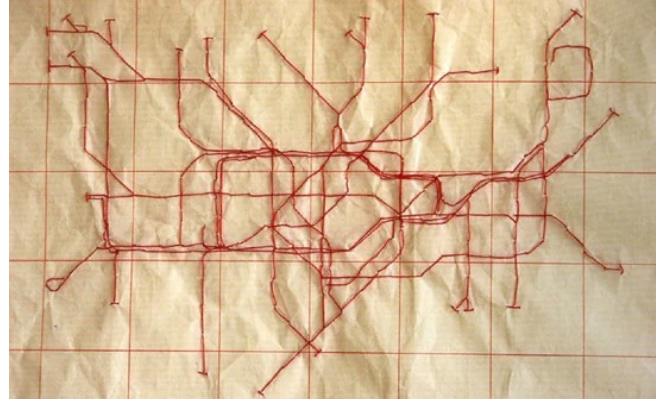
TOPICS FOR KEY THEMES – 1

ACROSS RESEARCH, PRODUCT, CASE STUDY



HARMONISATION ACTIONS

- Integration among the efforts of IOF, EMMC, PCS, SAREF-ETSI, AIOTI
- Standards observatory (ISO, IEEE), and recommendation
- IDSA, GAIA-X, Catena-X
- AMI 2030 initiatives and actions
- Open Knowledge Network projects
- Coordination and sustainability of Marketplaces



ALIGNMENT OF SEMANTIC MODELS

- Alignment of foundational models
- Cross-linking of domain reference ontologies
- Translation and transformation of semantic models
- Maintenance and enrichment of OCES ontology stack

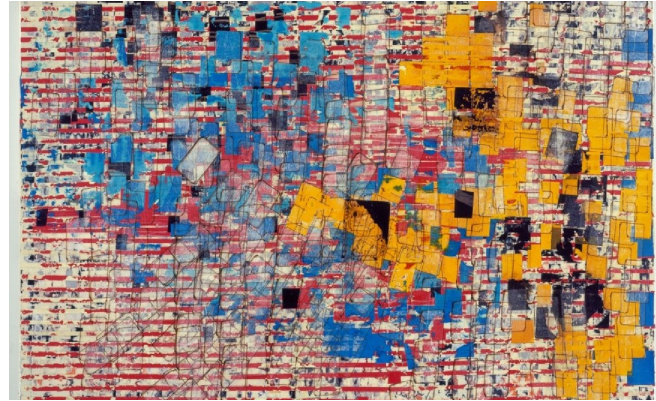


METHODOLOGY AND PROTOCOLS

- SKG Engineering Methodology (LOT4OCES, CFIHOS)
- SKG Evaluation, Maturity Model
- SKG FAIRness
- Enterprise Knowledge Strategies and Roadmap (Risk assessment, Translation, ROI)

TOPICS FOR KEY THEMES - 2

ACROSS RESEARCH, PRODUCT, CASE STUDY



TOOLS and PLATFORMS

- FAIR repository for models (IndustryPortal)
- SKG editors and managers (SousLeSens)
- Knowledge Graph Lifecycle Toolchain
- SKG FAIRness evaluations

LINKED DATA MANAGEMENT

- Tripple-stores and Graph DB
- Data transformation language and methos
- SKG learning (ML/DL, NLP, LLM)
- Search and Query (SPARQL, CYPHER)
- Linked Data Services (Repair, Automation, Analytics)
- Data fusion, Data space, Data Warehouse

INNOVATIONS and APPLICATIONS

- Digital Twin / Shadow
- IoT and Datafication
- Hybrid AI (Graph ML etc.)
- Explainable AI
- Generative AI
- Model-based Engineering

KGA SERVICES



KGA ACADEMY

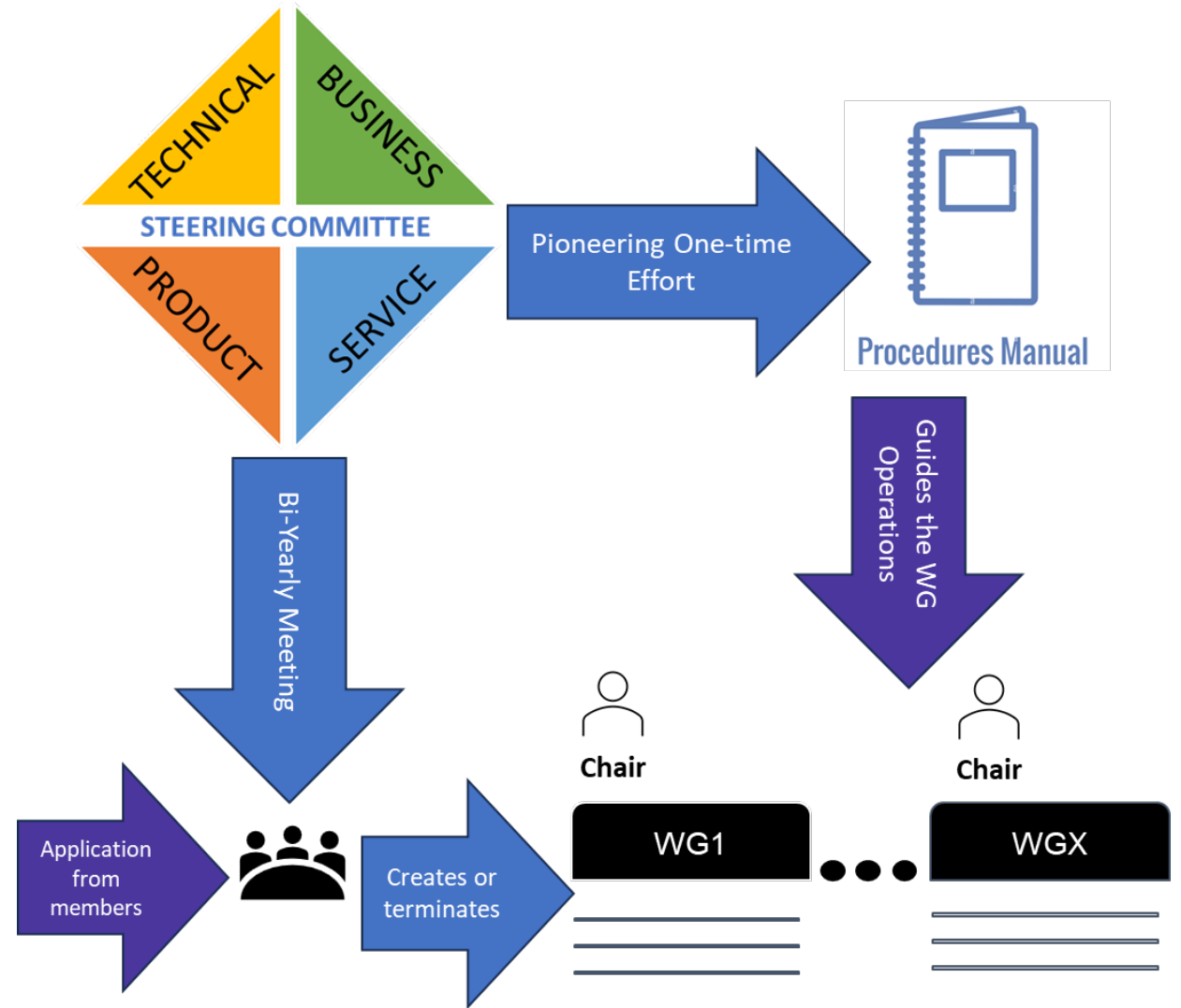
- Training courses (both online and in-person)
- Corporate training
- University graduate course curriculum design
- Certification

BESPOKE SOLUTIONS

- Organisation-specific digital strategy
- Customised SKG-based R&D and application development
- Enterprise KG maturity assessment
- Marketplace of SKG resources



HOW TO FORM WORKING GROUPS



QUARTERLY TIMELINE

Q4 2023			Q1 2024			Q2 2024			Q3 2024		
OCT	NOV	DEC	JAN	FEB	MAR	APR	MAY	JUN	JUL	AUG	SEP
<p>LAUNCH of KGA</p> <ul style="list-style-type: none"> • Statutes created. • Legal entity is formed. • Inauguration Event. • Interim office bearer elected by AB. • Extraordinary GA with only surrogate BOD to approve statutes and initiate steering committee for Procedure Manual. 			<p>First GENERAL ASSEMBLY</p> <ul style="list-style-type: none"> • Draft of procedure manual, and first budget is prepared. • First GA is scheduled around Feb end / March. • End of registration for founding membership • First yearly meeting of Steering Committee • First batch of WGs formed 			<p>LAUNCH of KGA ACADEMY</p> <ul style="list-style-type: none"> • Initial batch of training courses identified • KGA Academy is launched • First yearly BoD meeting 			<p>LAUNCH of KGA SERVICE</p> <ul style="list-style-type: none"> • Second yearly meeting of Steering Committee • KGA Service is launched 		

Q4 2024



RELEASE of KGA PRODUCTS



WHAT'S NEXT

KGA NEEDS YOU!

- KGA will conduct survey to understand the priority of topics and raise interest.
- Application for WG charters will open beginning of 2024
- Please contact us for
 - Providing ideas for or showing interest in WGs
 - Propose training programs
 - Collaborate to make new product or business solutions
 - Conducting case study

THANK YOU



ARKOPPAUL SARKAR



+33 76 936 5668



asarkar@enit.fr

WWW.KG-ALLIANCE.ORG